

Route 153

Updated: December 2011

Beaver via Puffer Lake to Junction City. Beaver-Puffer Lake 1920. Puffer Lake-Junction City May 13, 1941.

1953 Description:

From Beaver on Route 1 easterly via Puffer Lake to Junction City on Route 11.

Approved by the 1963 Legislature:

Approved by the 1965 Legislature:

1967 Legislature:

*(A)

1975 Legislature:

The new alignment of SR-153 in Beaver Canyon near Three Creek Reservoir, Designated SR-153, the old alignment is abandoned. (Description remains the same.)

*(B)

1979 Legislature Description:

From Route 160 in Beaver easterly via Puffer Lake to Route 89 in Junction City.

1981 Legislature: Description remains the same.

1983 Legislature: Description remains the same.

1985 Legislature: Description remains the same.

1986 Legislature: Description remains the same.

*(C)

1987 Legislature: Description remains the same.

1988 Legislature: Description remains the same.

1990 Legislature: Description remains the same.

1992 Legislature: Description remains the same.

1993 Legislature: Description remains the same.

1994 Legislature: Description remains the same.

1995 Legislature: Description remains the same.

1996 Legislature: Description remains the same.

1997 Legislature: Description remains the same.

1998 Legislative Description:

From Route 160 in Beaver easterly by Puffer Lake to Route 89 in Junction City.

1999 Legislature: Description remains the same.

2000 Legislature: Description remains the same.

2001 Legislature: Description remains the same.

2002 Legislature: Description remains the same.

2003 Legislature: Description remains the same.

Route 153 Cont.

2004 Legislature: Description remains the same.

2005 Legislature: Description remains the same.

2006 Legislature: Description remains the same.

2007 Legislature: Description remains the same.

2008 Legislature: Description remains the same.

2011 Legislature: Description remains the same

* Refers to resolution index page following.

Route 153

COUNTY/VOLUME & RESOLUTION NO.

A. Beaver Co. 5/12

B. Beaver Co. 6/12

C. Beaver Co. 7/19

DESCRIPTION OF RESOLUTION CHANGE

(A). Relocation/New Alignment -

In Beaver Canyon 3.7 miles distance.

(B). Realignment

From Mt. Holley Jct. To Puffer Lake via Mt. Holley Ski Resort. (Still Proposed)

(C). Relocation/New Alignment -

From a point near Mt. Holley Ski Area access road easterly to a point near Puffer Lake.

SR
File

PKS
356
SR-153
12
Loc 127

Interim Designation and Deletion of Federal-aid Highways
Authority: Sec. 27-12-27, UCA, 1953, As Amended

R E S O L U T I O N

State Route 153

Federal-aid Secondary Route Revision 356

WHEREAS, the completion of Project NS-356(1) in Beaver Canyon, a distance of 3.7 + - miles has resulted in the construction on new alignment a section of new roadway, and

WHEREAS, the old alignment will no longer serve as a public roadway, the Utah State Highway Department has obliterated and reseeded the old alignment in agreement with the U.S. Forest Service, and

WHEREAS, it has been recommended by Mr. Alex E. Mansour, District #5 Engineer, that State Route 153 be relocated to the new alignment resulting from the construction of Project NS-356(1).

NOW THEREFORE, pursuant to the Authority of Section 27-12-27, UCA, 1953, as amended, it is hereby resolved as follows:

That State Route 153 be relocated to the new alignment resulting from the completion of Project NS-356(1) and the old alignment within this area be abandoned,

That application be made to the Federal Highway Administration to relocate Federal-aid Secondary Route 356 to be coincident with the relocation of State Route 153,

That by this action State Highway System mileage and Federal-aid Secondary System mileage will increase 2.5 + - miles,

That the memorandum from Mr. Alex E. Mansour, pertaining to his recommendation for the relocation of State Route 153 be hereby incorporated as a part of this submission,

That the map attached illustrating the action taken herewith be here-
by incorporated as a part of this submission.

Dated this 10th day of December, 1973.

STATE ROAD COMMISSION OF UTAH

Clem A. Church
Chairman

R. L. Saun Cox
Vice-Chairman

Wayne S. Hunter
Commissioner

Gene H. ...
Commissioner

Commissioner

ATTEST:

David ...
Secretary

*Burrington & I... Hwy Route 140
Etc per*

UNITED STATES GOVERNMENT

Memorandum

DEPARTMENT OF TRANSPORTATION

FEDERAL HIGHWAY ADMINISTRATION

UTAH DIVISION

Salt Lake City, Utah

DATE: January 9, 1974

In reply refer to: 08-49.41

SUBJECT: Revision of Federal-Aid Secondary Route 356
in Beaver County

FROM : George W. Bohn
Division Engineer

TO : Mr. Blaine J. Kay
07-SP Director of Highways
Salt Lake City, Utah

RECEIVED
JAN 11 1974
UTAH STATE
DEPT. OF HIGHWAYS
CENTRAL FILES

Reference is made to Mr. L. R. Jester's January 3, 1974, memorandum on the above subject. The request to relocate a portion of FAS 356 is approved.

This first secondary system action of the year increases the secondary system mileage by 2.5 miles.

Attached is a copy of the approved description for your records.

G. W. Bohn
George W. Bohn
Attachment

COPY OF LETTER RETAINED IN CENTRAL FILES RETURN THIS ORIGINAL TO CENTRAL FILES AFTER ACTION HAS BEEN COMPLETED.

ROUTED TO	INITIAL	ACTION
<i>Jester</i>		
Information		Return to Sender
Approval		
Signature		Return to Sender for Necessary Action
		My Signature

RECEIVED
Utah State Department of Highways
Transportation Section

JAN 11 1974

AM PM
7,8,9,10,11,12,1,2,3,4,5,6

STATE OF UTAH

FEDERAL-AID SECONDARY SYSTEM

Proposed Revision Federal-aid Secondary Route No. 356

Approved January 10, 1974

Submitted January 3, 1974

Route Designation		Brief Description of Route and Termini	County	Mileage On State Highway System	Mileage On Local System	Total Length
F.A.S. Route No.	State or Local Route No.					
356	SR-153	From Federal-aid Primary Route 39 in Beaver easterly to a junction with road to Puffer Lake. Approved: 6-14-46 Revised: 1-7-60	Beaver	22.5		22.5

Note: The revision of this route does not change the approved description but increases the total length 2.5 miles.

Memorandum

UTAH STATE DEPARTMENT OF HIGHWAYS

DATE: January 3, 1974

TO : George W. Bohn, Division Engineer
08-42.4 Federal Highway Administration

FROM : L. R. Jester, P.E.
07-S Chief, Systems Planning Division

SUBJECT: Revision of Federal-aid Secondary Route 356 in Beaver County

The attached resolution adopted by the Utah State Road Commission on December 13, 1973, indicates the Road Commission's request for the revision of Federal-aid Secondary Route 356.

The revision of this route will not change the approved route description, but will increase the length of this route 2.5 + - miles.

Transmitted are the requested number of resolutions and route description sheets pertaining to the revision of this Federal-aid route.

Attachment

LRJ:BDB:WDMears:bt

Memorandum

UTAH STATE DEPARTMENT OF HIGHWAYS

DATE: November 15, 1973

TO : B. Dale Burningham
Chief Research Engineer

FROM : Alex E. Mansour, P.E.
District Five Engineer

SUBJECT: State Road 153
Beaver Canyon

Alex E. Mansour

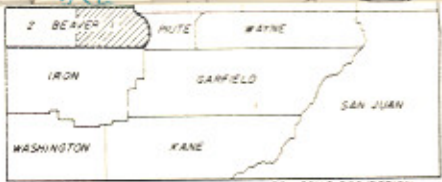
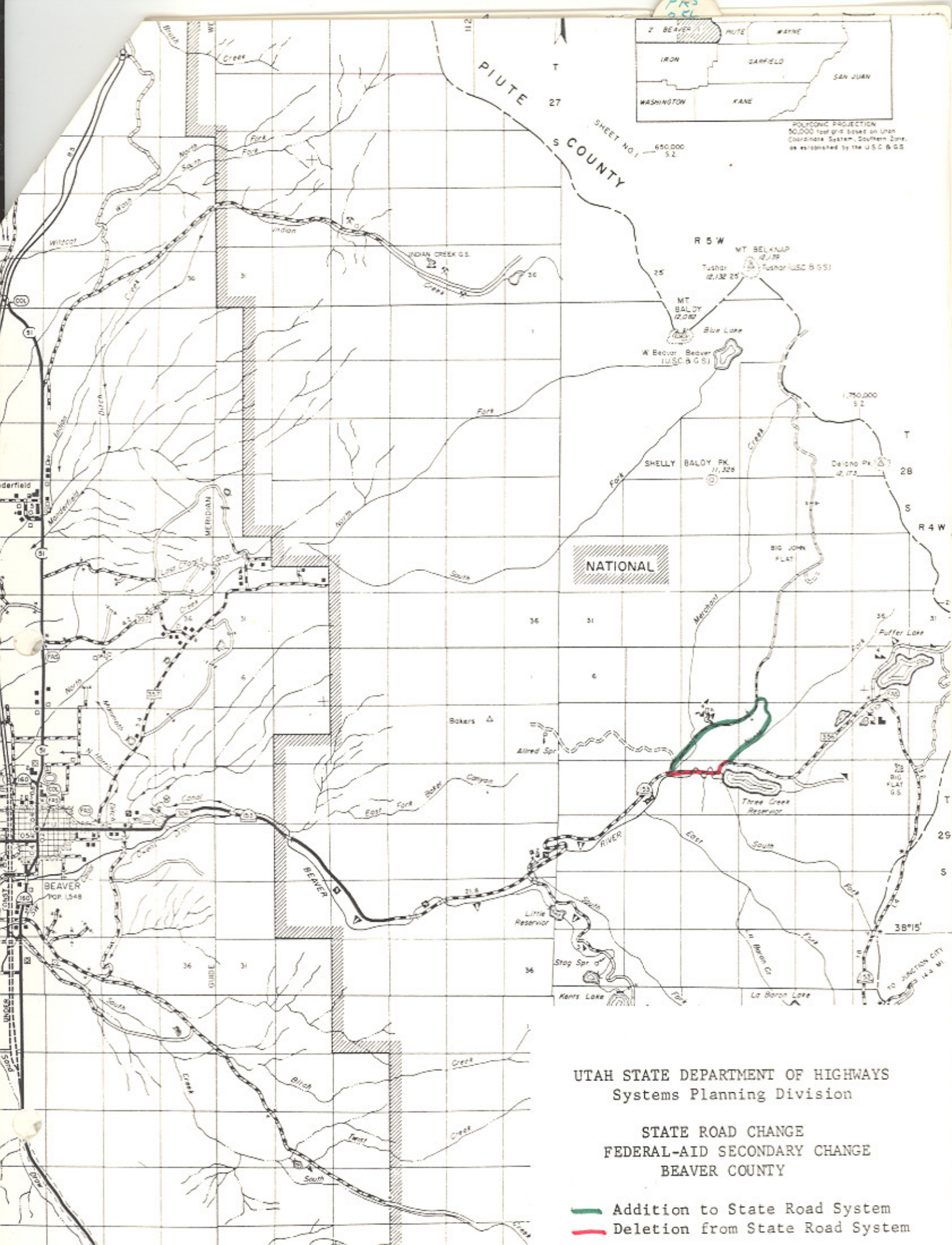
We have now completed a realignment of State Route 153 as shown on the attached map. We will appreciate your implementation of the necessary procedure to abandon the old alignment and to adopt the new alignment.

Attachment

UTAH STATE
DEPT. OF HIGHWAYS
CENTRAL FILES

NOV 19 1973

RECEIVED



POLYCONIC PROJECTION
 50,000 foot grid based on Utah
 Coordinate System, Southern Zone,
 as established by the U.S.C. & G.S.

NATIONAL

UTAH STATE DEPARTMENT OF HIGHWAYS
 Systems Planning Division

STATE ROAD CHANGE
 FEDERAL-AID SECONDARY CHANGE
 BEAVER COUNTY

- Addition to State Road System
- Deletion from State Road System

UTAH STATE DEPARTMENT OF HIGHWAYS

bc: Howard B. Leatham, Engineer for Planning & Programming

Same letter sent to: Mr. Marvin E. Olsen, Dept. of Soil Conservation, S.L.C.

Information sent to: Alex E. Mansour, District #5 Engineer

Jerry Fenn	Clarence Stephens	Ellen Wandell	Charles Bertolina
Ralph Murdock	Evelyn Crill	Harold Brown	Jim West
Dean Steed	W. J. Stephenson	Ray Behling	Don Jensen
Porter M. Gooch	David Sargent	Bonnie Garcia	Clarence Bywater
Keith Rosevear	David E. Kennison	John W. Homer	Ken Riddle
Robert Walsh	Robin Hood	Chauncey Powis	Winston Neiman
Lillian Witkowski	Ezra Christensen	E. Paul Gilgen	Robert Weadon
Mary Decker	Bert Kros		

January 22, 1974

Mr. Fred B. Harris, Chairman
Beaver County Commission
Beaver County Courthouse
Beaver, Utah 84713

Dear Commissioner Harris:

Subject: Revision of State Route 153 and Federal-aid Secondary Route 356
in Beaver County

On December 13, 1973, the State Road Commission adopted a resolution to relocate State Route 153 to the new alignment created by Project NS-356(1) in Beaver Canyon.

The Federal Highway Administration approved the relocation of Federal-aid Secondary Route 356 to the new alignment on January 9, 1974.

Attached is a copy of the resolution and a location map.

Very truly yours,

L. R. Jester, P.E.
Chief, Systems Planning Div.

Attachment

P

R E S O L U T I O N

State Route 153

WHEREAS, it has been determined by staff that a new location is needed on State Route 153 in the vicinity of Puffer Lake to better serve the area, and

WHEREAS, various locations have been studied for realignment purposes, and

WHEREAS, the specific location for the realignment has not yet been decided.

NOW THEREFORE, be it resolved that State Route 153 from Mt. Holly Junction to Puffer Lake be realigned via Mt. Holly ski resort and that the proposed realignment will carry the State Route 153 designation, and

Be it further resolved that the Department of Transportation will continue to maintain the old State Route 153 alignment until such time as the new alignment is completely constructed to acceptable standards, and

Be it resolved that the accompanying map be submitted as a part of this resolution.

Dated this 11th day of September, 1978.

UTAH TRANSPORTATION COMMISSION

6.2 miles total

B. L. L. L. L.
Chairman

W. J. J. J. J.
Vice-Chairman

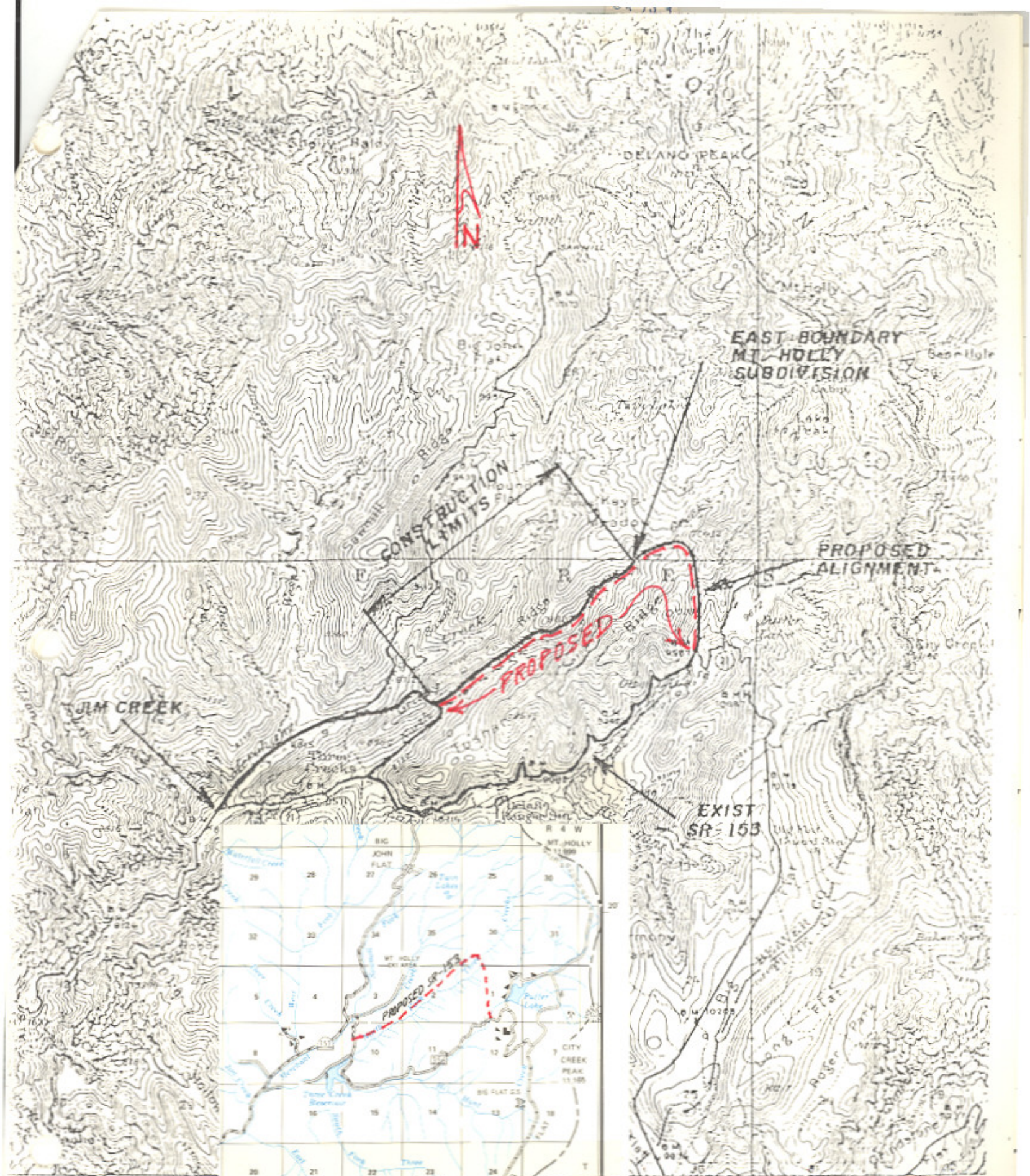
L. L. L. L. L.
Commissioner

G. L. L. L. L.
Commissioner

Commissioner

ATTEST:

D. L. L. L. L.
Secretary



CONSTRUCTION LIMITS

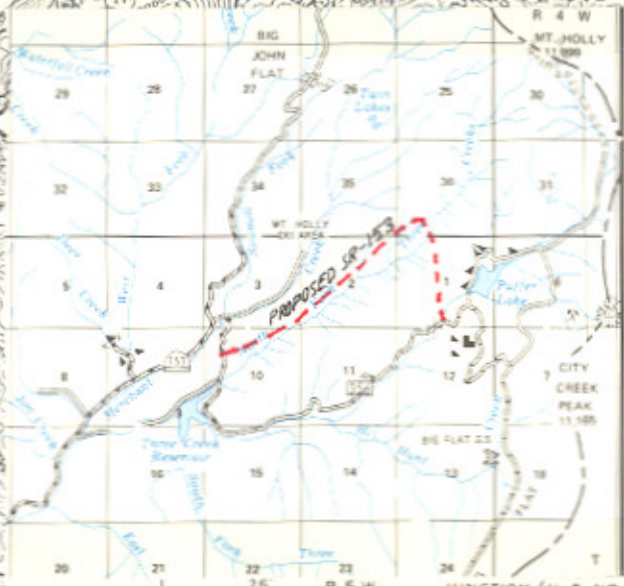
EAST BOUNDARY
MT HOLLY
SUBDIVISION

PROPOSED
ALIGNMENT

PROPOSED

JIM CREEK

EXIST
SR-153



Scale 1:2500



BEAVER (JUNC U S NO 81) 27 MI

21

21

44
1000
2000
3000
4000
5000
6000
7000
8000
9000
10000

Memorandum

UTAH DEPARTMENT OF TRANSPORTATION

DATE: September 7, 1978

TO : Alex Mansour, P.E.
District #5 Director

FROM : L. R. Jester, P.E.
Engineer for Transportation Planning

SUBJECT: Realignment of SR-153 in Beaver County

On August 11, 1978, the Utah Transportation Commission approved the realignment of State Route 153 near Mt. Holly Ski resort as described in the attached resolution.

Attached is a copy of the resolution and a location map.

Attachment

bc: Howard B. Leatham, Engineer for Planning & Programming

Information sent to:

Jerry Fenn	W. J. Stephenson	Martin Cutler	Charles Bertolina
Ralph Murdock	J. Q. Adair	Ray Behling	E. E. Lovelace
Dennis Spackman	James Naegle	Bonnie Garcia	Don Jensen
Robert Wheadon	Robin Hood	John W. Homer	Clarence Bywater
Keith Rosevear	Art Guerts	Henry Skriner	Ken Riddle

WDMears:RDent:bt

RESOLUTION

Relocation of State Route 153

WHEREAS, Section 27-12-29 of the Utah Code Annotated, 1953, as amended, provides for the disposition of realigned highways, and

WHEREAS, the construction of State Route 153 on new alignment from a point near Mt. Holly Ski Area access road easterly from a point near Puffer Lake has been completed, and

WHEREAS, it has been recommended by the District 5 Director that the old alignment between m.p. 17.10 and m.p. 22.05 be abandoned.

NOW, THEREFORE, be it resolved as follows:

That the designation of State Route 153 be relocated to be coincident with the new alignment between a point near Mt. Holly Ski Area access route easterly to a point near Puffer Lake, and

That the old alignment between these points be abandoned, and

That the accompanying map be hereby incorporated into this submission.

Dated this 12th day of September, 1986

UTAH TRANSPORTATION COMMISSION

[Signature]
Chairman

[Signature]
Vice-Chairman

[Signature]
Commissioner

[Signature]
Commissioner

Attest:

[Signature]
Acting Secretary

[Signature]
Commissioner

